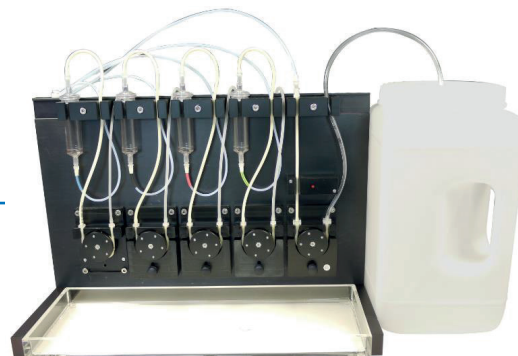


Peristaltic Perfusion System PPS5

Peristaltic Perfusion System with five Peristaltic Pumps and Software Control

Technical Specification



General Characteristics	
Operating temperature	10 °C to 40 °C
Storage temperature	0° C to 50 ° C
Dimensions	260 mm x 385 mm x 180 mm
PPS2	
Weight	7.8 kg
Number of perfusion pump inlets	4
Perfusion pump outlet	1
Maximum perfusion rate inlets	30 ml per minute
Maximum perfusion rate outlet	30 ml per minute
Bubble detector	optical fluid flow control
Analog and Digital Input	
Number of digital input BNC connectors	5
Configuration of the BNC input connectors	Outer ring: ground; center: TTL signals from + 3 V to max. + 5 V
Power Supply (Type: FSP 150-AAA N1)	
Voltage range @ frequency	100 to 240 VAC @ 47 to 63 Hz
Power consumption	10 W
Software Control	
Computer connection	USB 2.0 High Speed (type A - B)
Operating system	Microsoft Windows ® 11, 10 or 8.1, English and German version